

## The Georgian House Museum

### A guide for groups of learners

- Groups - please divide your group into smaller ones of about 8 people to explore the museum
- Access - via steps on Great George Street. No lift available, stair access only in the museum
- Museum layout – basement, ground floor, first floor and second floor
- Bag storage & eating - no bag storage or eating area is available. Why not picnic on Brandon Hill?
- Toilets - there are no toilets available at this museum

#### Highlights - what to see and do



##### Basement Kitchen

What can you see that tells you this is a kitchen?



##### Basement Laundry Room

How did each object help with the household laundry?



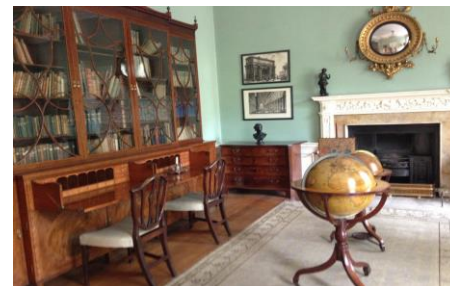
##### Basement Corridor

Look for the plunge pool, bells to call servants and the Housekeeper's room.



##### Ground Floor Dining Room and Breakfast Room

This room is set for a meal. What would be your ideal meal?



##### First Floor Library

Objects collected from around the world were kept safe in this room. Do you have a collection or something precious to you?



##### First Floor Drawing Room

Can you imagine what a Georgian party would look like in this room? What would they enjoy as entertainment?



##### First Floor Ladies Room

In this room the ladies of the house chatted, sewed and met friends. What do you enjoy doing with your friends?



##### Second Floor Bedroom

Look out of the window, can you see the city? How does the view differ from when the house was built in 1790?



##### Second Floor information

Find out more about Mr Pinney's involvement in the sugar trade and the life of Pero Jones in this small display.